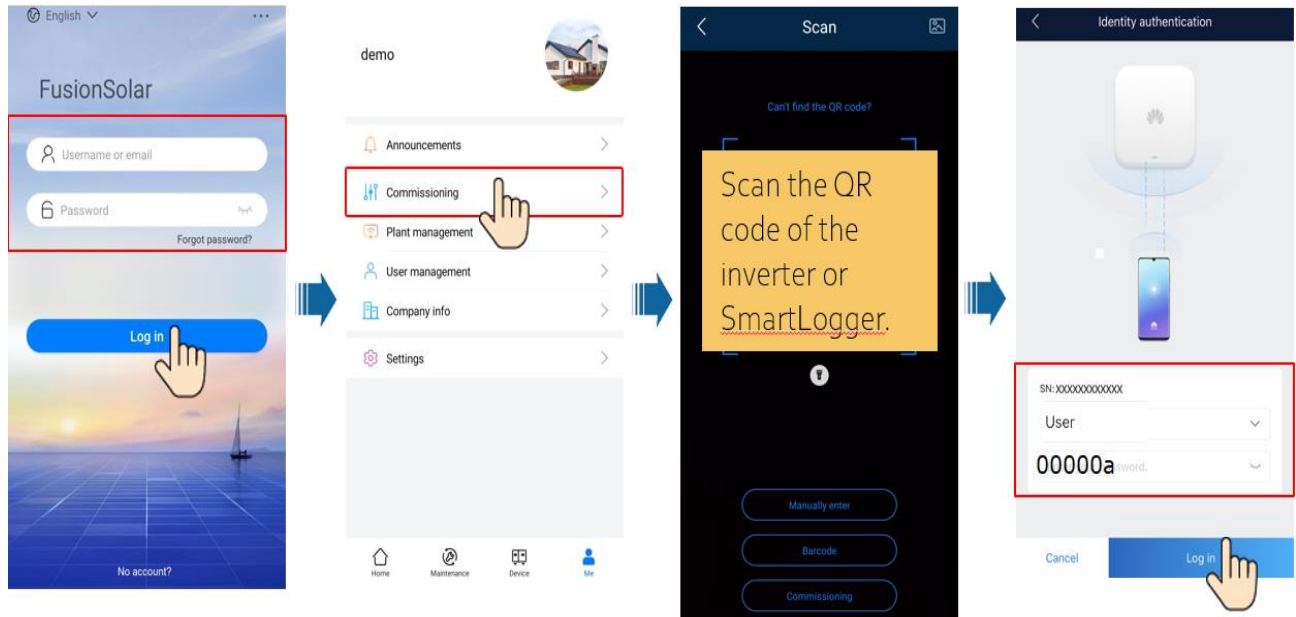


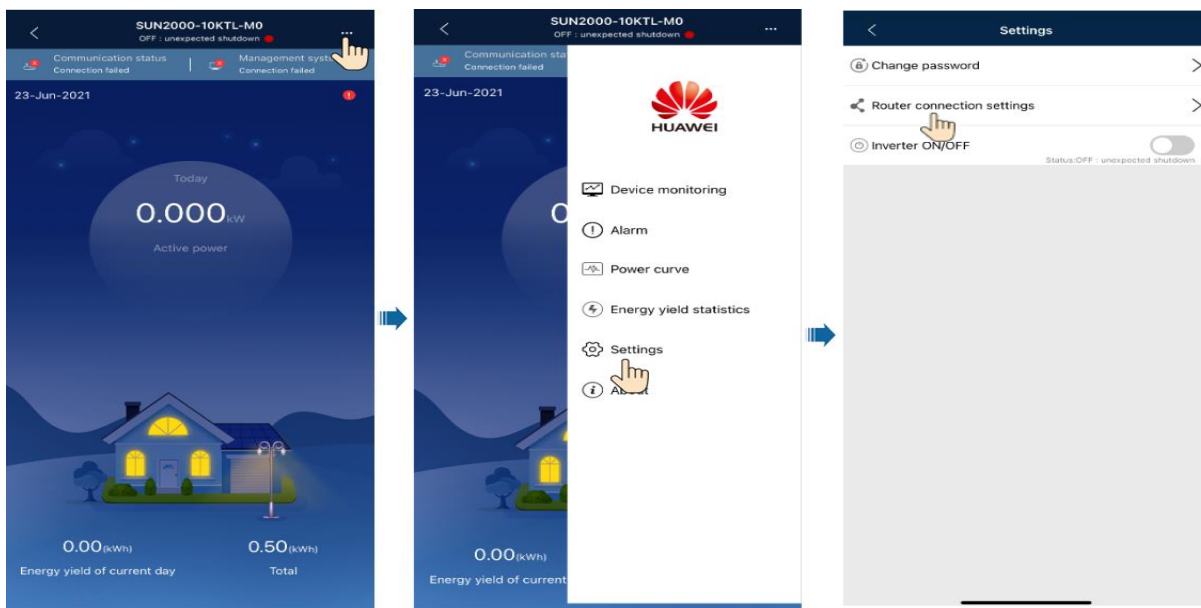
1. Login on inverter with FusionSolar APP

Login with your account from Fusion Solar, choose Me -> Commissioning and login as **USER** with the default password **00000a**.



2. Set the Wi-Fi Network

After you logged in, choose “...” from the right top corner -> **Settings**→**Router connection settings**→select your WiFi network and insert the password→**Connect**



How to change the Wi-Fi network of inverter as end-user

