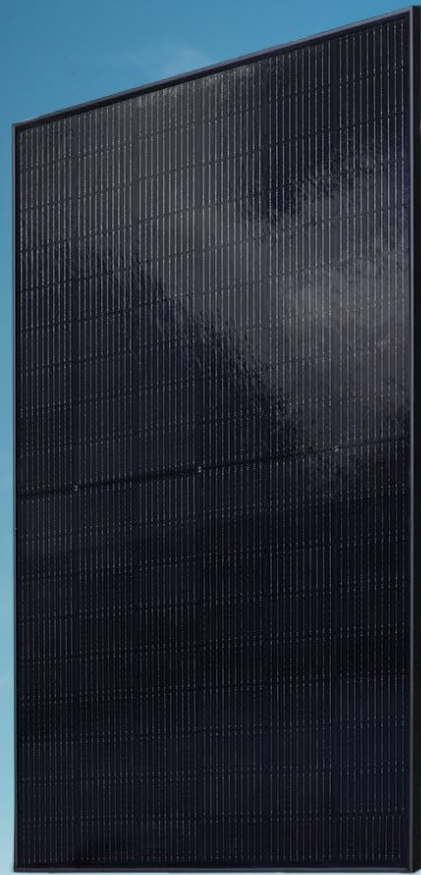




PRODUCT CIRCULARITY DATASHEET



Awarded with the

Oscar of Sustainability' –
Cradle to Cradle GOLD
Certification



Made using 100%
renewable energy



800 times lower CO₂
Scope 1–2 emissions'

Market average: 16,5 kg CO₂/kW

SoliTek: 0,02 kg CO₂/kW
200 kW PV system &
800 kW heat pumps for
heating/cooling



A net-zero
manufacturing



30 years
Warranty



50 years
Lifetime

Material composition

	Framed glass-glass module	Non-framed glass-glass module
Weight	24-35 kg	30-32 kg
Power	370 - 505 Wp	370 - 435 Wp
Aluminum frame	8,7% - 12,3%	none
Front glass	38,8% - 43,4%	46,4% - 46,6%
Back glass	38,8% - 43,4%	46,4% - 46,6%
Junction box	0,25% - 0,35%	0,26% - 0,28%
POE encapsulant film	2,69% - 3,8%	2,94% - 3,1%
Solar cell	1,98% - 2,8%	2,1% - 2,2%
Copper ribbons	0,62% - 0,88%	0,67% - 0,71%
Cables	0,47% - 0,66%	0,5% - 0,53%

Recyclability

Recycled glass content	35%
Recyclability	95-98%
Energy recover (encapsulation + recycling efficiency loss)	2-5%

Sustainability

Sustainability certifications of SoliTek glass-glass panels



Circularity certificate
Cradle to Cradle

Gold level

Industry leader



Digital product
passport SundaHus

A level

Industry leader



Digital product passport
Byggarubedomningen

Accepted level

Among the few other



Globally recognized
sustainability assessment
platform EcoVadis

Silver level

Among the few other

What do I get by choosing SoliTek panels with these sustainability certificates?

Extra 7 points

LEED

Extra 5 points

WELL

Extra 2 credits

BREEAM

Lifecycle assessment*

(Cradle-to-gate emissions) Scope 1-3

SoliTek

808-858

kg CO₂ per kWp

<540

on request

Industry average

1050

kg CO₂ per kWp

*(Calculations based on CERTISOLIS methodology)

Nice, but how to recycle your recyclable modules?

First, re-use

Contact second-hand
PV panel buyers

SecondSol

2ndlifesolar

Preparation for re-use:

please be careful and remove the module from the system without damaging it. Otherwise, it won't be possible to re-use. Carefully stack them on the pallet. The economic return is around 0,03-0,25 EUR/Wp for second-hand PV modules.

If not possible, then recycle:

Contact our dedicated recycling
partner in Germany - LuxChemtech

LuxChemtech

Preparation for recycling:

please be careful and remove the module from the system without damaging it. Otherwise, it won't be possible to recycle PV modules with the high-efficient recycling process. Carefully stack them on the pallet.